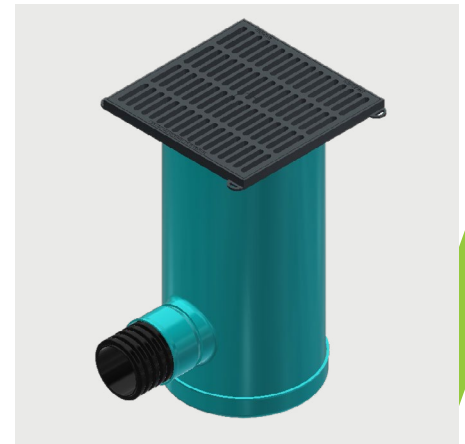


Nyloplast[®] Structure with 3' x 3' Inlet Grate

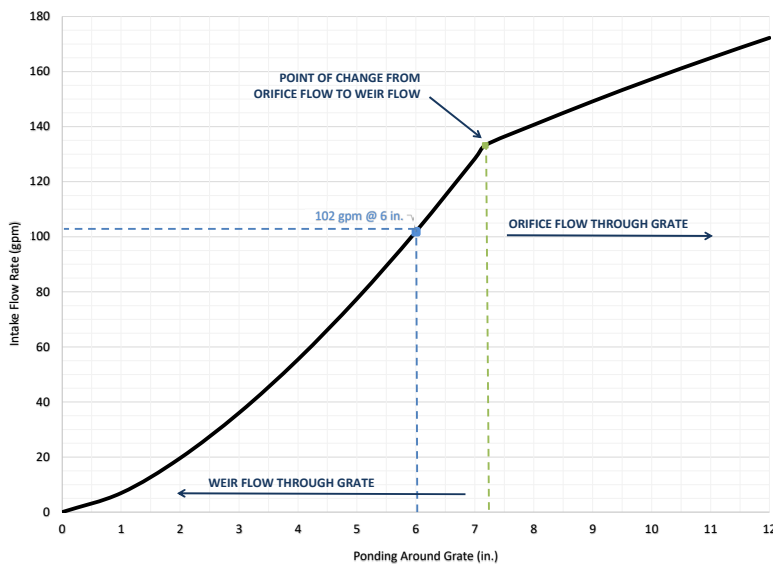
The Nyloplast 3' x 3' (900 x 900 mm) stormwater inlet grate is our newest traffic rated inlet. This stormwater inlet was designed to provide long term performance with water tight joints, speed of installation, and maximization of inlet capacity. This 3' x 3' grate and Nyloplast structure is a cost effective solution to traditional precast and built to exceed project requirements in paving applications.

Features

- Ideal for traffic installs, exceeds H-20 loading
- Made from heavy duty ductile iron for a long service life
- Great for roads and parking with high flow
- ASTM rated A536 grade 70-50-05 frame and grate
- Available for 24" (600 mm), 30" (750 mm) & 36" (900 mm) basins
- Installed cost savings with one light weight structure and built-in pipe connections
- Water tight joint connections to prevent premature degradation of structure and surrounding road base
- Easy field adaptability with risers, ability to trim, and connect to additional watertight branches
- For 3' x 3' (900 x 900 mm) inlet capacity see chart below



3' x 3' Inlet Grate Capacity Chart



Drain Basin Configurator

Try the online configurator at www.basinconfigurator.com. Create a custom drain basin in minutes and get the documentation needed to specify parts and get pricing.



ADS "Terms and Conditions of Sale" are available on the ADS website, www.ads-pipe.com. The ADS logo and the Green Stripe are registered trademarks of Advanced Drainage Systems, Inc. Nyloplast[®] is a registered trademark of Nyloplast, Inc.
© 2022 Advanced Drainage Systems, Inc. #11061 2/22 CS

adspipe.com

800-821-6710