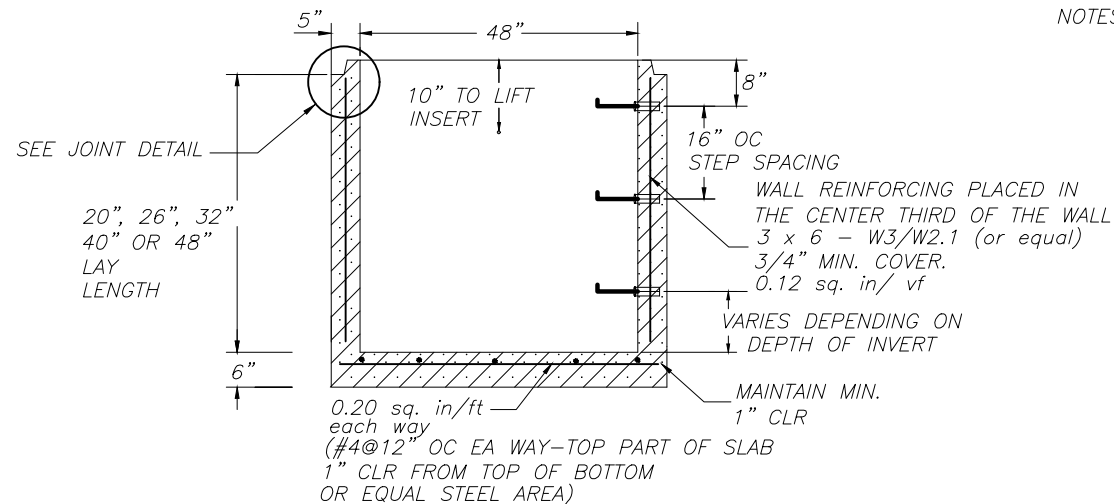


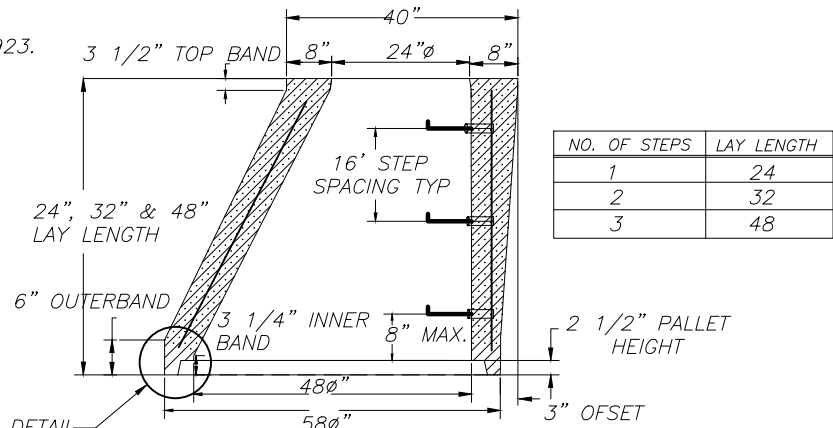
NOTES:

1. MANUFACTURED TO MEET OR EXCEED THE LATEST REVISIONS OF ASTM C478 AND AASHTO M199.
2. BUTYL MASTIC JOINT SEALTANT IN ACCORDANCE WITH AASHTO M198 AND ASTM C990.
3. ALL SECTIONS FURNISHED WITH OSHA RATED CAST-IN LIFTING INSERTS FOR HANDLING.
4. HOLES SIZED TO ACCOMMODATE FLEXIBLE RUBBER CONNECTORS IN ACCORDANCE WITH ASTM C923.
5. CONCRETE:
 - A. STRENGTH:.....4,000 PSI, MIN. 28 DAYS
 - B. CEMENT:.....PORTLAND CEMENT PER ASTM C150
 - C. AGGREGATE:.....NATURAL PER ASTM C33
 - D. ADDITIVES:.....FLY ASH PER ASTM C618
6. STEEL REINFORCEMENT:
 - A. CONES, RISERS, AND BASE WALLS:.....0.12 SQUARE INCHES PER VERTICAL FOOT
 - B. BASE FLOORS:.....0.20 SQUARE INCHES PER LINEAL FOOT EACH WAY
7. PLASTIC ENCAPSULATED STEEL STEPS AT 16" OC TYPICAL.
8. TWO CAST-IN LIFT INSERTS AT APPROXIMATE BALANCE POINTS. APPROX 10" FROM TOP WITH #3 REBAR LOOP
9. FLAT SLAB TOP, CONES, BASES AND RISER DESIGNED FOR HS-20 LOADING
10. EXTENDED BASE SECTION SHALL BE CAST IN ONE PIECE INCLUDING THE EXTENDED LIP AS A SINGLE UNIT.
11. STEEL SHALL BE ASTM A-706 GRADE 60
12. BURY OF MANHOLE SHALL BE LIMITED TO 40' MAX. USER OF MANHOLE SHALL BE RESPONSIBLE FOR PROVIDING A SUITABLE FOUNDATION



BASE SECTION DETAIL

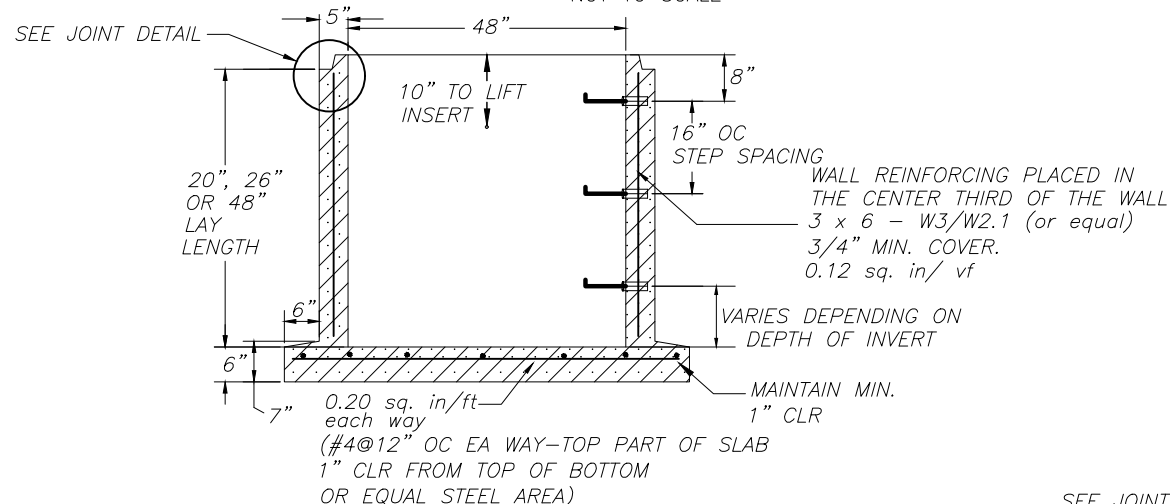
NOT TO SCALE



CONE SECTION DETAIL

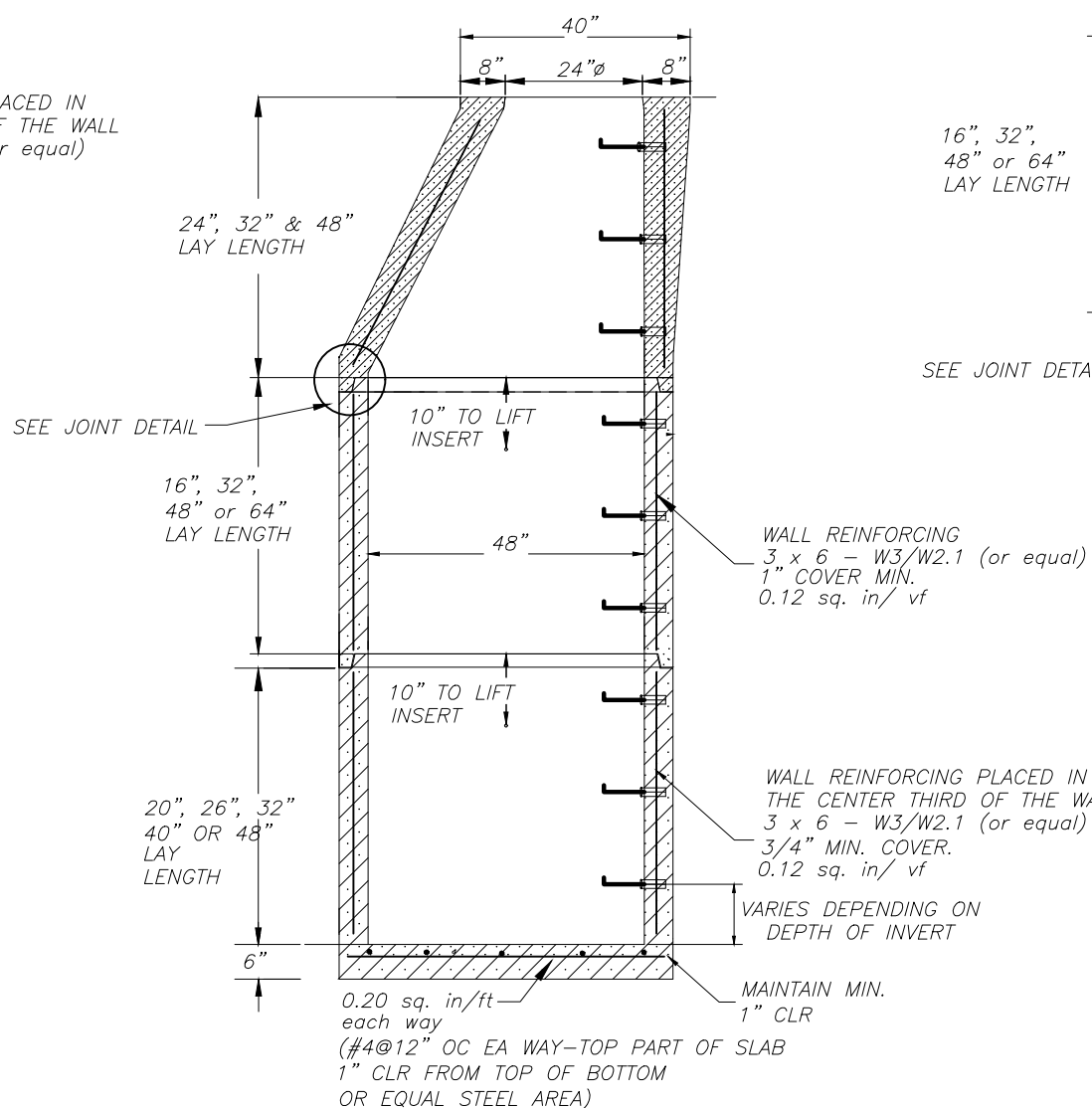
NOT TO SCALE

NO. OF STEPS	LAY LENGTH
1	24
2	32
3	48

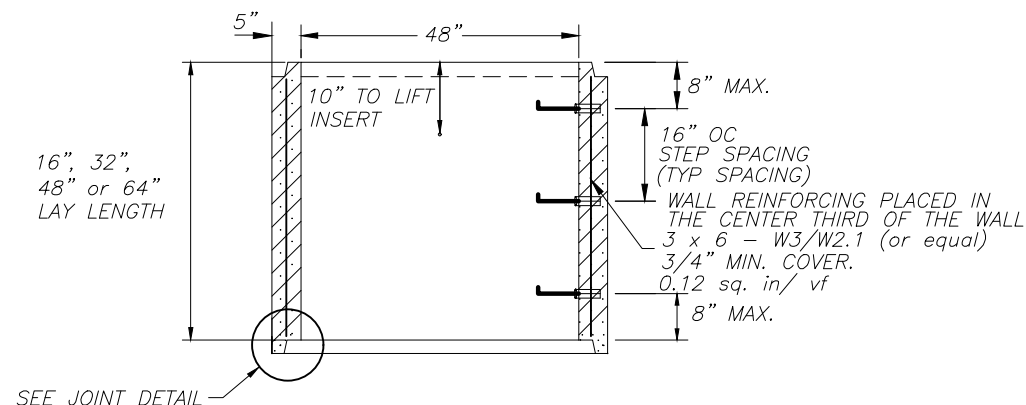


EXTENDED BASE SECTION DETAIL

NOT TO SCALE

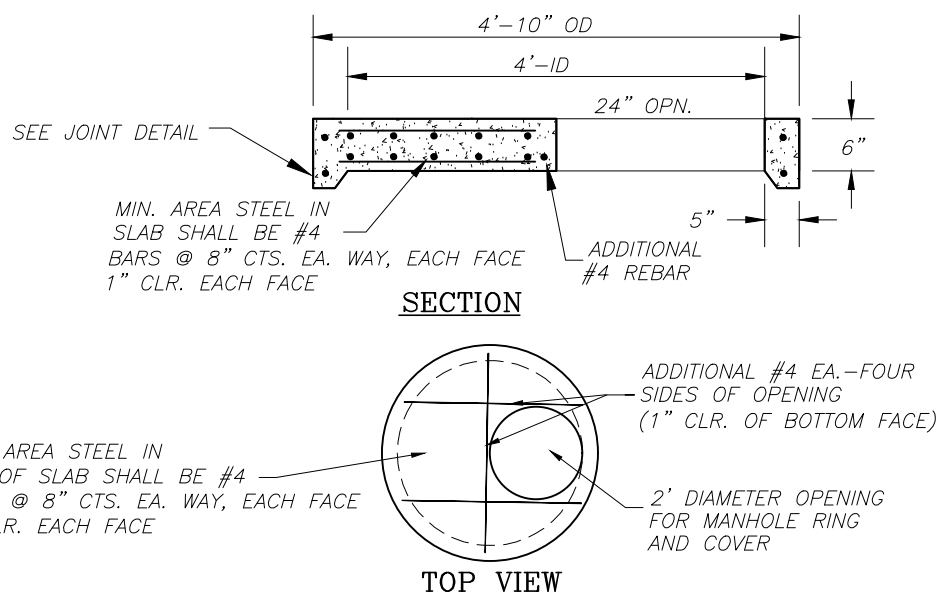


MANHOLE SECTION DETAIL



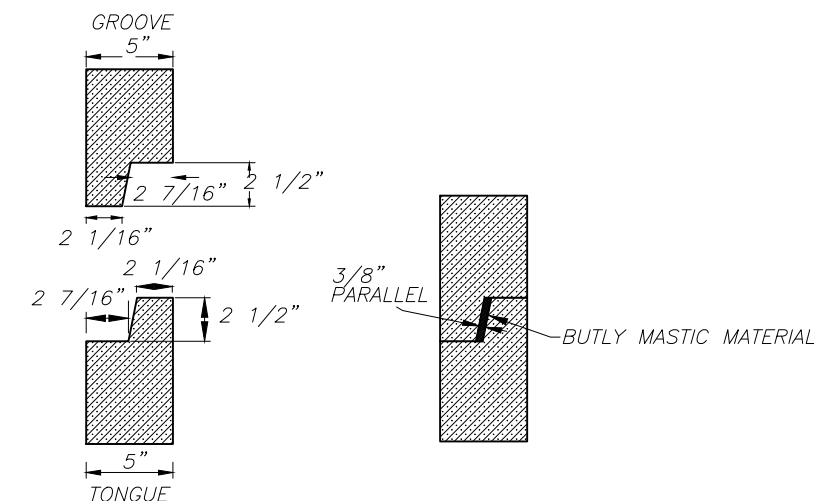
RISER SECTION DETAIL

NOT TO SCALE



FLAT SLAB TOP DETAIL

NOT TO SCALE



JOINT DETAIL

NOT TO SCALE

NO.	REVISIONS	DATE	BY

DESIGNED — MAW
 DRAWN — LGC
 CHECKED — MAW
 PROJECT MANAGER — RHW

NOT TO SCALE



WRIGHT & ASSOCIATES
 ENGINEERS & SURVEYORS
 209 1ST AVE. SOUTH
 CONOVER, NC 28613
 (828) 465-2205 OFFICE
 (828) 465-5878 FAX
 NC FIRM LIC. NO. C2242



4' DIA. MANHOLE
 H-20 LOADING MANHOLE DETAILS

DATE: AUGUST, 2012
JOB NO.: 702-014
DRAWING NO.:
SHEET 1 OF 1