

ADS® Barracuda™ Max

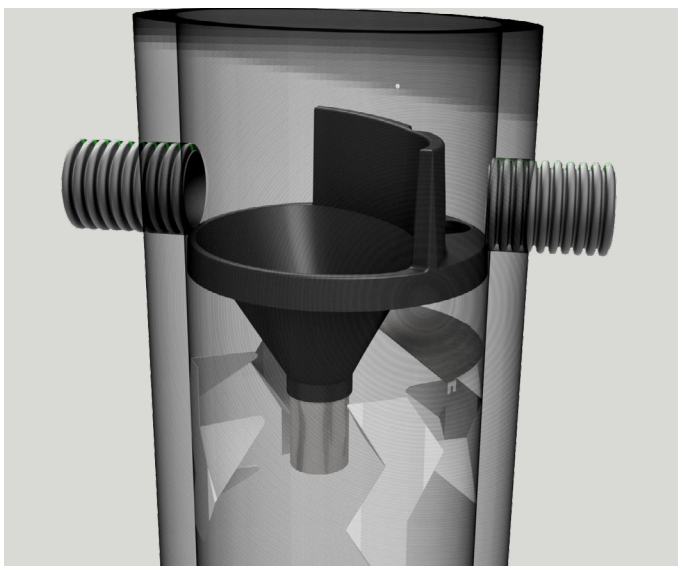
The Barracuda Max is market-changing stormwater quality technology. This high-performance vortex hydrodynamic separator is designed to remove total suspended solids in order to protect our precious receiving waters. The Barracuda Max is also an outstanding value that offers multiple pipe configurations, and quick installation. The “Max” version of the Barracuda is built on the base platform of the original ADS Barracuda with improved removal efficiencies and installation components.

Features

- Single manhole design
- No elevation loss between the inlet and outlet
- Variable inlet/outlet angle configurations (not just 180 degree orientation)
- Internal bypass for inline installation (where applicable)
- Revolutionary, patent-pending “teeth” mitigate turbulence in the sump area to prevent re-suspension of captured contaminants and an added deflector plate and bowl extension enhance the unit’s removal capabilities

Benefits

- Internal components are in stock for quick delivery
- The S3, S4, S6, and S8 can be installed in a standard 36” (900 mm), 48” (1200 m), 72” (1800 m), and 96” (2400 m) precast manhole, respectively
- The S3 & S4 can be provided factory installed within a 36” (900 mm) and 48” (1200 mm) ADS HP manhole and delivered to the jobsite
- The Barracuda Max “teeth” and deflector plate apparatus are fabricated and designed for quick and easy field assembly
- Designed for easy maintenance using a vacuum truck or similar equipment.
- Inspection and maintenance are performed from the surface with no confined space entry



Barrucuda Specification

Materials and Design

- Concrete Structures: Designed for H-20 traffic loading and applicable soil loads or as otherwise determined by a Licensed Professional Engineer. The materials and structural design of the devices shall be per ASTM C857 and ASTM C858.
- 36" (900 mm) and 48" (1200 mm) HP Manhole Structures: Made from an impact modified copolymer polypropylene meeting the material requirements of ASTM F2764. The eccentric cone reducer shall be manufactured from polyethylene material meeting ASTM D3350 cell class 213320C. Gaskets shall be made of material meeting the requirements of ASTM F477.
- Separator internals shall be substantially constructed of stainless steel, polyethylene or other thermoplastic material approved by the manufacturer.

Performance

- The stormwater treatment unit shall be an inline unit capable of conveying 100% of the design peak flow. If peak flow rates exceed maximum hydraulic rate, the unit shall be installed offline.
- The Barracuda Max unit shall be designed to remove at least 80% of the suspended solids on an annual aggregate removal basis. Said removal shall be based on full-scale third party testing using OK-110 media gradation or equivalent and 300 mg/L influent concentration. Said full scale testing shall have included sediment capture based on actual total mass collected by the stormwater treatment unit.

- OR -

The Barracuda Max unit shall be designed to remove at least 50% of TSS using a media mix with d_{50} =75 micron and 200 mg/L influent concentration.

- OR -

The Barracuda Max unit shall be designed to remove at least 50% of TSS per current NJDEP/NJCAT HDS protocol.

- The stormwater treatment unit internals shall consist of (1) separator cone assembly, and (1) sump assembly, which includes the "teeth".

Barracuda Max Model	Manhole Diameter	NJDEP (50% removal)	OK-110 (80% removal)
S3	36" (900 mm)	0.85 CFS (24.1 L/s)	0.86 CFS (24.1 L/s)
S4	48" (1200 mm)	1.52 CFS (43.0 L/s)	1.52 CFS (43.0 L/s)
S6	72" (1800 mm)	3.40 CFS (96.3 L/s)	3.42 CFS (96.8 L/s)
S8	96" (2400 mm)	6.08 CFS (172.2 L/s)	6.08 CFS (172.2 L/s)

* Peak bypass flows are dependent on final design

Installation

Installation of the stormwater treatment unit(s) shall be performed per manufacturer's installation instructions. Such instructions can be obtained by calling Advanced Drainage Systems at 800-821-6710 or by logging on to www.adspipe.com.

