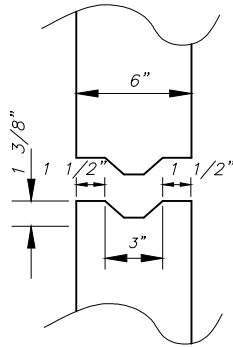


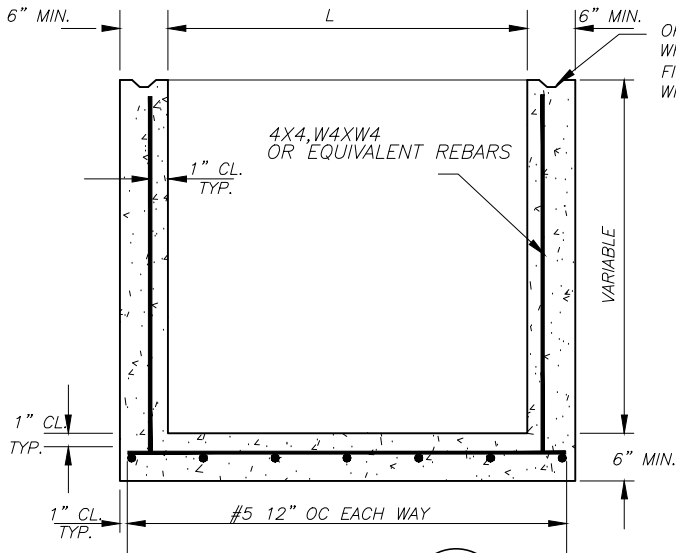
BOX SIZE (WXL)	BOX HEIGHT	NCDOT IDENTIFIER NO.
2'-3"x3'	VARIES	NCDOT PC-2736TB-082207
3'x3'x	VARIES	NCDOT PC-3636TB-082207
4'x4'x	VARIES	NCDOT PC-4848TB-082207
5'x5'x	VARIES	NCDOT PC 6060TB-082207
6'x6'x	VARIES	NCDOT PC-7272TB-082207
30"x60"x	VARIES	NCDOT CITY OF GREENSBORO 402 CURB INLET
30"x70"x	VARIES	NCDOT CITY OF GREENSBORO 403 CURB INLET
24"x45"x	VARIES	



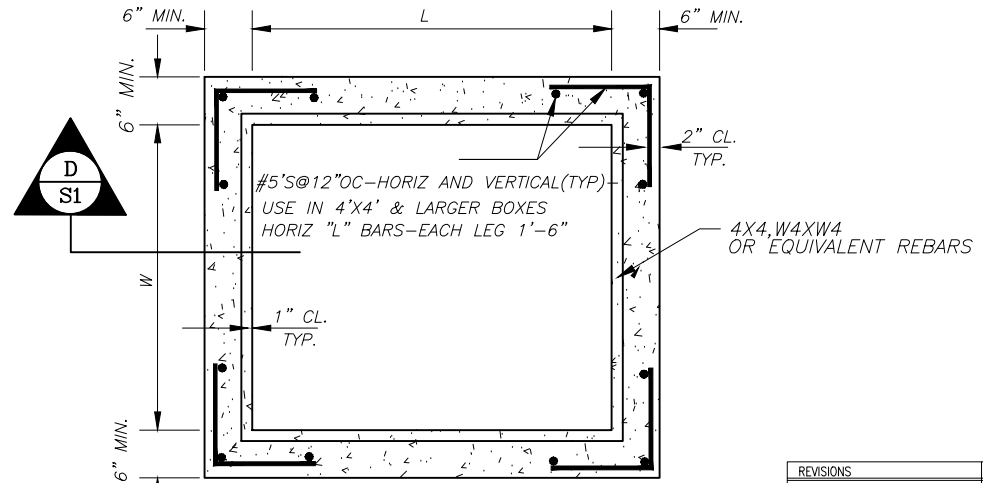
**JOINT DETAIL**

**NOTES:**

1. MANUFACTURE HAS THE FLEXIBILITY TO PRODUCE/PROVIDE VARIOUS STEEL CONFIGURATIONS AS LONG AS THE AMOUNT OF STEEL AREA PER FOOT MEETS OR EXCEEDS THE AREA OF STEEL REQUIRED USING EITHER WWF OR REBARS.
2. DESIGN LOADS PER ASTM C-890-06
3. REINFORCING STEEL SHALL BE ASTM A706 - DEFORMED BARS - GRADE 60. WWF SHALL MEET OR EXCEED ALL REQUIREMENTS OF ASTM A185
4. THE BURIAL DEPTH (DEFINED AS THE DISTANCE FROM GROUND TO INTERIOR OF THE BOX BOTTOM) SHALL NOT EXCEED 15'.
5. CONCRETE USED IN MANUFACTURE OF THE BOX SHALL BE MIN 4,000 PSI @ 28 DAYS
6. ORIENT BOX SO PIPES ENTER OR EXIT THROUGH THE WALLS & NOT CORNERS. PIPES MAY ENTER OR EXIT THROUGH CORNERS IF A MINIMUM OF 6" OF STRUCTURE CAN BE PROVIDED ABOVE THE OUTSIDE DIAMETER AT THE PIPE CROWN.
7. TOP OF THE WALL SHALL BE CAST WITH A KEY TO ACCEPT A RISER OR PRECAST LID. IF LID OR RISER IS NOT USED, FILL KEY W/ GROUT.
8. JOINTS SHALL BE SEALED WITH FLEXIBLE BUTYL OR BITUMINOUS SEALANT MEETING AASHTO M198.
9. PROVIDE STEPS IN BOXES WHEN DEPTH OF BOX EXCEEDS 4'-0"
10. INSTALL BOXES PER NCDOT STANDARDS
11. SEE SHEET 2 OF 2 FOR COMPANION PRECAST RISER.
12. THE MAXIMUM INSIDE CLEAR DIMENSION SHALL BE LIMITED TO 6'X6' IN PLAN AREA
13. BOX FABRICATED IN ACCORDANCE WITH NCDOT STD 840.46
14. 24"X45" BOX FABRICATED IN ACCORDANCE WITH NCDOT STD 840.13 AND 840.18



**SECTION FRONT ELEVATION** D  
S1



**PLAN VIEW PRECAST BOX**

REVISIONS	DATE	BY
ADDED NCDOT IDENTIFIER NO.S	12-17-2007	RHW
ADDED CITY OF GREENSBORO	2-3-2011	RHW
CURB INLETS		
ADDED 2X3 BOX TO SCHEDULE	11-16-2011	RHW
ADDED 24"X45" BOX	12-18-2012	RHW



**WRIGHT & ASSOCIATES**  
ENGINEERS & SURVEYORS  
209 1ST AVE. SOUTH  
CONOVER, NC 28613  
(828) 465-2205 OFFICE  
(828) 465-5878 FAX



NOT TO SCALE

**CONSTANT WALL WIDTH BOXES  
PRECAST REINF. CONC. DRAINAGE BOX  
TRAFFIC BEARING**

DATE: APRIL, 2007	DRAWING NO.:
JOB NO.: 702-001	
SHEET 1 OF 2	